



asset management system

Container and Pallet Management System

Introduction

and

Interactive Demo Website Guide

What is ?

asset management system

- A fully integrated packaging fleet management system which reduces loss, damage and oversized, inefficient, durable packaging fleets
- From a basic “Hub and Spoke” system to complex supply chain bespoke systems
- Fully supported system specification & Implementation program, and after sales support
 - ✓ *Supply chain and process analysis focusing on current and future requirements and resource needs*
 - ✓ *Full system specification presentation including IT and operational process*
 - ✓ *Pre-implementation testing & specification sign off*
 - ✓ *Hardware, such as Barcode / RFID scanners and dedicated PCs supplied under rental or lease*
 - ✓ *User training and after sales Software and Hardware support & maintenance program*
- SITU-8 is cost effective and simple to use providing **real** commercial benefit

Why Do you need



- To manage and control durable packaging fleets
- To reduce overall packaging fleet costs
- To maximise fleet visibility and cost control
- To optimise packaging fleet utilisation
- To manage repair and maintenance program
- Durable packaging is a high value asset
- Proof of accountability for damage and loss



Packaging Fleet Cost Allocation and Accountability



asset management system

**Who is
Accountable?**

Authorised Container /
Pallet Fleet Users

***All Fleet Users and subcontract
transport and logistics
providers***

**What are they
cost accountable
for?**

Additional Costs
Incurred

***Damage & Repair, Cleaning,
Loss, Extended and
unauthorised use***

**How do you
confirm
accountability?**

Process

***Signed Collection notes,
POD's, & PUS's***

IT Systems

***SITU-8 and Logistics IT
Systems***

Supply Chain Process, Control and Improvements



➤ Comprehensive Management Reporting Functions

- ✓ *Facilitates trend analysis and packaging requirement planning*

➤ Cycle time management and reduction

- ✓ *Through synchronous container flow integrated with lean manufacturing process*
- ✓ *Individual cycle time parameters set for specific user requirements*
- ✓ *Fleet optimisation creates packaging surplus & therefore cost avoidance on future needs*

➤ Data synchronisation with other management systems

- ✓ *Reduces the element of “human error” data input*
- ✓ *Synchronises all aspects of the business / operation*
- ✓ *Facilitates accurate equipment planning for future / seasonal requirements*

SITU-8 Website Features and Benefits



asset management system

➤ User friendly Windows Interface

- ✓ Ensures system can be used by most users with minimal training

➤ On screen stock movement history

- ✓ Provides complete audit trail with multi field “drill down” facility

➤ Tailored Reports - “on-screen” or via CSV. file conversion

- ✓ Users can reformat or re-sort data via excel spreadsheets, facilitating trend analysis

➤ On Screen Unit Finder

- ✓ Locate any numbered unit & its contents

➤ Unit ordering on-line.

- ✓ Place an order for equipment 24 / 7

➤ On screen News Bulletin Board

- ✓ Ensures communication with all users simultaneously

A screenshot of the Simons Reeve RENTAL website. The header features the company logo and navigation links: LATEST NEWS, STOCK LIST, BUILD REPORTS, PLACE ORDER, CONTACT US, and UNIT FINDER. The 'BUILD REPORTS' section is active, displaying a form with fields for 'Your Email Address', 'Report Type' (radio buttons for 'On Screen View' and 'Emailed As CSV File'), 'Tracking Location' (a dropdown menu showing 'SRJEMC Jemima Longfellow'), 'Unit Type' (a dropdown menu showing 'Cages'), 'Date From' (1st Jan 2000), and 'Date To' (1st Dec 2010). Below the form, a list of 'Available Reports' is shown as buttons: SR02 - STOCK STATUS, SR03 - LATE RETURNS, SR04 - UNIT DETAIL REPORT, SR05 - CYCLE TIMES, and SR06 - UNIT HISTORY. The top right corner indicates the user is 'LOGGED IN AS: SRDEPT' with a 'LOGOUT' button.

SITU-8 System Features and Benefits



asset management system

➤ SQL server with MS Access Interface

- ✓ *Provides system security and easy user access with minimal training*

➤ Various Data Collection Options and Minimal data entry requirement

- ✓ *Scanners and or manual data entry options*
- ✓ *Easier integration into current operations and future operational strategy*
- ✓ *Low labour cost and simple to use – record unit, despatch and receipt locations*



➤ Management by volume / type, and numbered units simultaneously

- ✓ *Implementation onto existing fleets without numbers as well new numbered units*

➤ Manages and confirms equipment user and cost accountability

- ✓ *Negates disputes over cost responsibility for equipment use, damage or loss*

SITU-8 System Features and Benefits



asset management system

➤ **Manages and records cleaning and repair & maintenance programs**

- ✓ *Can identify equipment design and / or usage queries via trend analysis*
- ✓ *Can identify high risk equipment users by level of repairs required*



➤ **Monitors users equipment allocations preventing stockpiling**

- ✓ *Maintains fleet at optimum level, therefore minimising costs*

➤ **Can facilitate Interface with other warehouse and transport systems**

- ✓ *Direct Data Link or via translation software, to integrate into current systems*

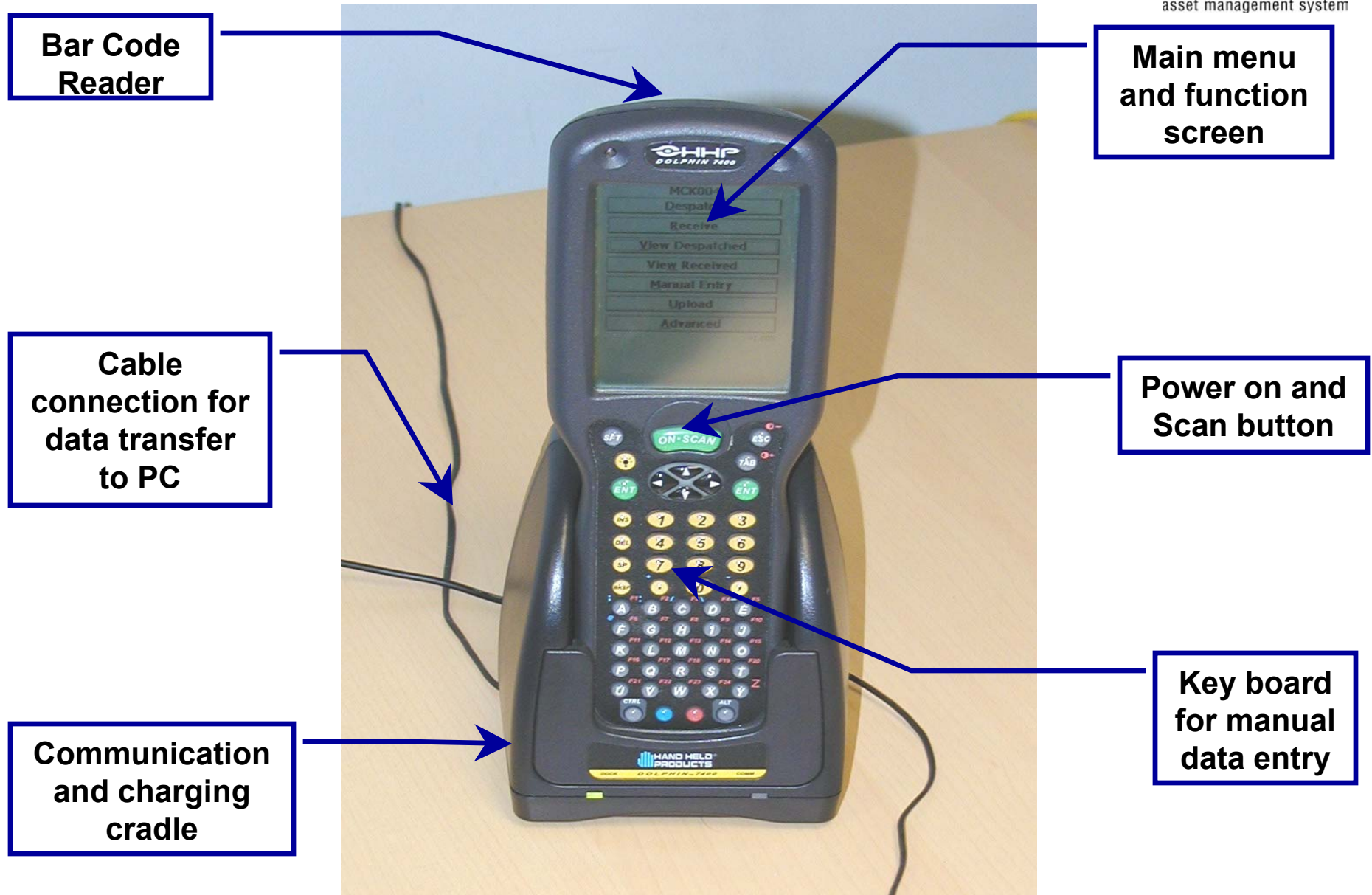
➤ **Manages Transfer Hire, “free usage” periods & “over use” penalties**

- ✓ *Specific cost areas can be managed to suit individual user requirements*

Bar Code Data Collection – Typical Scanner Example



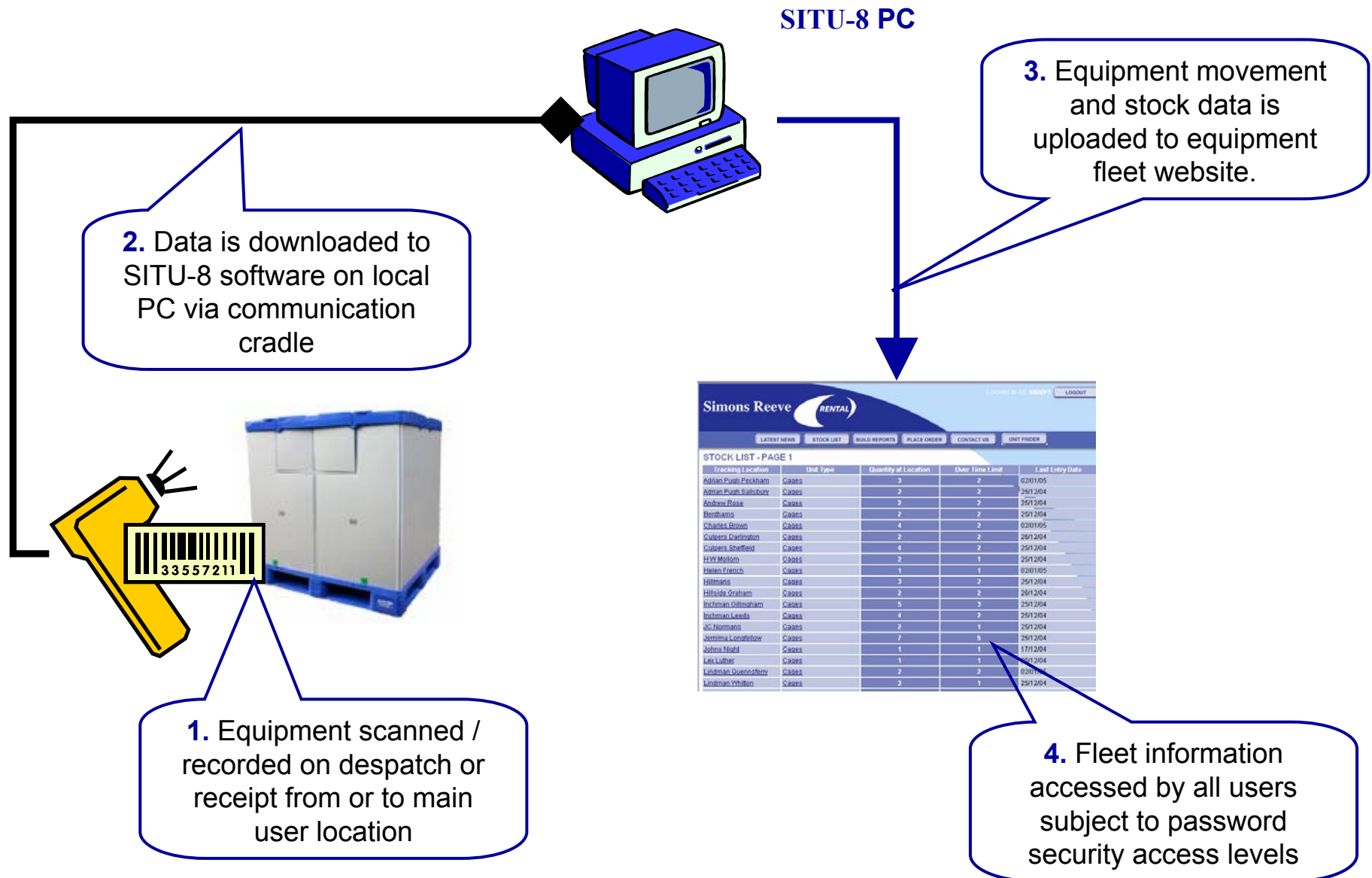
asset management system



How does it work? – (Basic System Example)



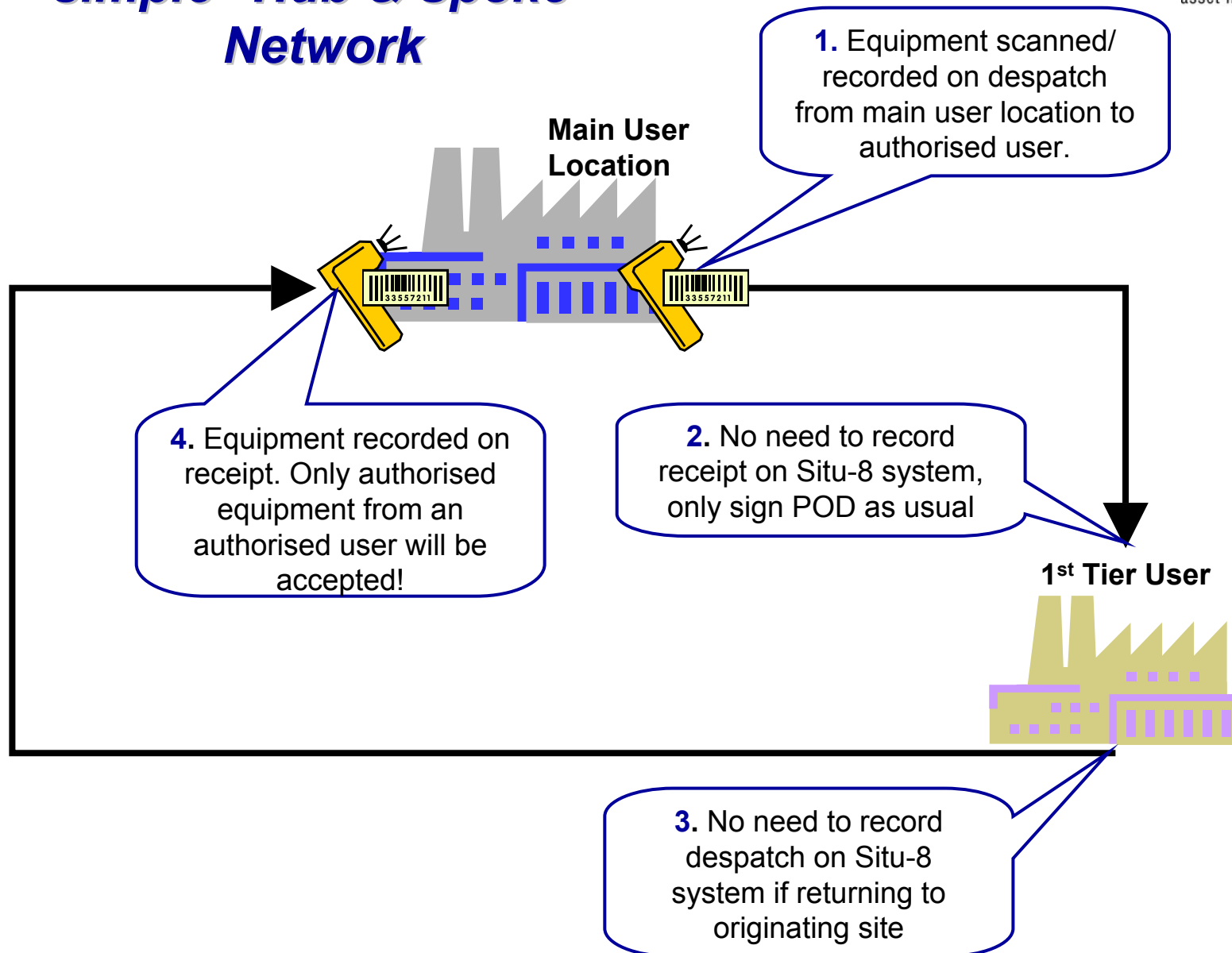
asset management system



Data Collection Points on simple “Hub & Spoke” Network



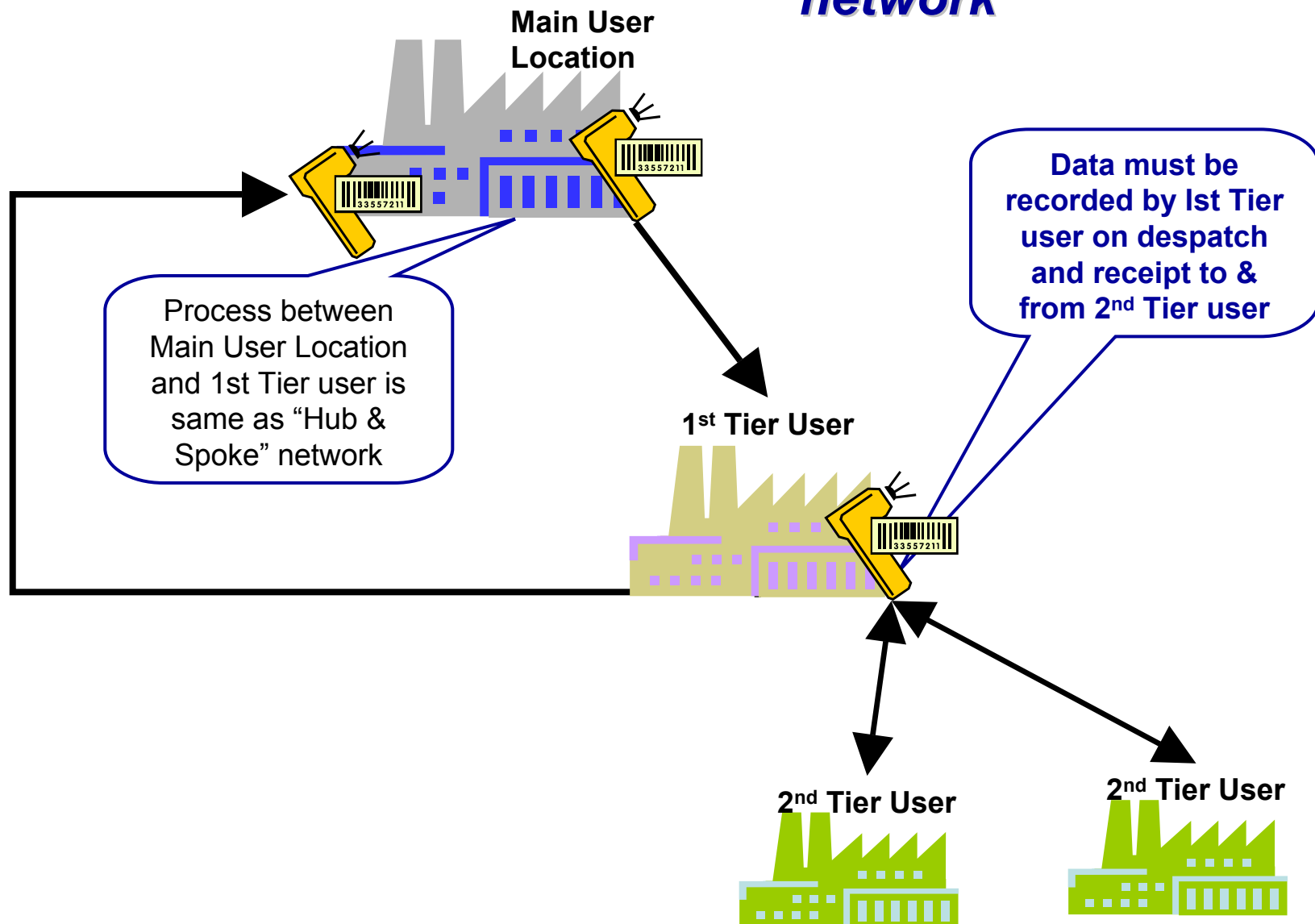
asset management system



Data Collection Points on multi-tiered network



asset management system





asset management system

Container and Pallet Management System

Interactive Demo Website

User Interface and Functions

SITU-8.CO.UK - ONLINE MANAGEMENT APPLICATION - Microsoft Internet Explorer provided by Freeserve

File Edit View Favorites Tools Help Address http://www.situ-8.co.uk/ Go

USERNAME:
PASSWORD:
LOGIN

Your own Company Logo here !

Enter Username & Password & Login

For the purposes of this guide you are logging in as the Master User, which assumes you are the owner and /or the administrator of the Packaging Fleet(s), and therefore have access to all site information and movement data, as opposed to an equipment user who can only view their own site information and movement / stock data.

WELCOME

Management System, from Simons Reeve Rental.

ment and control system for Simons Reeve du
password protected Internet enabled manage

reporting functions necessary for you to

- Manage and control durable packaging fleets
- Reduce overall packaging fleet costs
- Increase fleet visibility
- Optimise packaging f
- Provide proof of accou
- Manage your repair an

To ensure you get the m
download the SITU-8 W

LATEST NEWS
THE NEW SITU-8 SITE

DOWNLOAD WEBSITE USER GUIDE

Your Email Address: Request Document

Done Internet

start SITU-8 SITU-8.CO.UK - ONLI... Microsoft PowerPoint ... 15:55

Simons Reeve



LOGGED IN AS: SRARNP

LOGOUT

LATEST NEWS

STOCK LIST

BUILD REPORTS

PLACE ORDER

CONTACT US

WELCOME

Welcome to the SITU-8 Asset Manag

SITU-8 is a central management and
fleets with a comprehensive passwo

SITU-8 will provide tools and reporting

- Manage and control durable packaging fleets
- Reduce overall packaging fleet costs
- Increase fleet visibility and cost control
- Optimise packaging fleet utilisation
- Provide proof of accountability for damage and loss
- Manage your repair and maintenance program

To ensure you get the maximum benefit from this Internet site and the reporting functions available, please download the SITU-8 Website User Guide PDF file from the link below.



All Function Buttons can be accessed from any screen when logged into system

LATEST NEWS

THE NEW SITU-8 SITE IS NOW IN THE PROCESS OF BEING TESTED READY FOR LAUNCH.

DOWNLOAD WEBSITE USER GUIDE

Your Email Address:

As the Master User and System Administrator you can update the News Bulletin Board with fleet information and ensure synchronous communication with all fleet users. For example you can announce stock take days or new pallet introduction etc...

Simons Reeve



LOGGED IN AS: SRARNP

LOGOUT

LATEST NEWS

STOCK LIST

BUILD REPORTS

PLACE ORDER

CONTACT US

WELCOME

Welcome to the SITU-8 Asset Management System, from Simons Reeve Rental.

SITU-8 is a central management system for fleets with a comprehensive package of services.

SITU-8 will provide tools and reports to help you:

- Manage and control durable packaging fleet
- Reduce overall packaging fleet costs
- Increase fleet visibility and control
- Optimise packaging fleet utilisation
- Provide proof of accountability
- Manage your repair and maintenance

To view container or pallet stock figures for all sites on one report, left mouse click the "STOCK LIST" button

equipment system.



To ensure you get the maximum benefit from this Internet site and the reporting functions available, please download the SITU-8 Website User Guide PDF file from the link below.

LATEST NEWS

THE NEW SITU-8 SITE IS NOW IN THE PROCESS OF BEING TESTED READY FOR LAUNCH.

DOWNLOAD WEBSITE USER GUIDE

Your Email Address:

Request Document

Simons Reeve

LATEST NEWS

STOCK LIST

BUILD REPORTS

PLACE ORDER

CONTACT US

UNIT FINDER

STOCK LIST - PAGE 1

Tracking Location	Unit Type	Quantity at Location	Over Time Limit	Last Entry Date
Adrian Pugh Peckham	Cages	3	2	02/01/05
Adrian Pugh Salisbury	Cages	2	2	25/12/04
Andrew Rose	Cages	2	2	25/12/04
Benthams	Cages	2	2	25/12/04
Charles Brown	Cages	4	2	02/01/05
Culpers Darlington	Cages	2	2	26/12/04
Culpers Sheffield	Cages	4	2	25/12/04
H W Mollom	Cages			
Helen French	Cages			
Hillmans	Cages			
Hillside Graham	Cages			
Inchman Gillingham	Cages			
Inchman Leeds	Cages	4	2	25/12/04
JC Normans	Cages	2	1	25/12/04
Jemima Longfellow	Cages	7	5	25/12/04
Johns Night	Cages	1	1	17/12/04
Lex Luther	Cages	1	1	25/12/04
Lindman Quennsferry				
Lindman Whitton				
Marstons				
[Next]				

Unit type at this site is only cages, however if other equipment was used on site it would also be shown on this page

Information shown is number of cages on site, how many are due to be returned and the date of last despatch or receipt of cages

Select a location where you wish to further investigate the equipment movements and left mouse click over it.



start

SITU-8

SITU-8.CO.UK - ONLI...

Microsoft PowerPoint ...

Internet

15:57

SITU-8.CO.UK - ONLINE MANAGEMENT APPLICATION - Microsoft Internet Explorer provided by Freeserve

File Edit View Favorites Tools Help Address Address bar

Confirmation of location and equipment type being investigated

AS: SRDEPT LOGOUT

LATEST NEWS STOCK LIST BUILD REPORTS PLACE ORDER CONTACT US UNIT FINDER

MOVEMENTS FOR JEMIMA LONGFELLOW (CAGES)

Back to Stock List

Date	Location	Unit Type	Units Received	Delivered	Units Despatched
30/10/04	Jemima Longfellow	Cages	4		0
06/11/04	Jemima Longfellow	Cages	3		0
15/11/04	Jemima Longfellow	Cages	1		0
20/11/04	Jemima Longfellow	Cages	1		0
11/12/04	Jemima Longfellow	Cages	2		0
24/12/04	Jemima Longfellow	Cages	0		-1
25/12/04	Jemima Longfellow	Cages	2		0

Date of cage receipt or despatch

Number of units received or despatched in that transaction

To return to previous page left mouse click over "Back to Stock List"

start SITU-8 SITU-8.CO.UK - ONLI... Microsoft PowerPoint ... Internet 15:58

LOGGED IN AS: SRDEPT

LOGOUT

Simons Reeve



LATEST NEWS

STOCK LIST

BUILD REPORTS

PLACE ORDER

CONTACT US

UNIT FINDER

STOCK LIST - PAGE 1

Tracking Location	Unit Type	Quantity at Location	Over Time Limit	Last Entry Date
Adrian Pugh Peckham	Cages	3	2	02/01/05
Adrian Pugh Salisbury	Cages	2	2	25/12/04
Andrew Rose	Cages	2	2	25/12/04
Benthams	Cages	2	2	25/12/04
Charles Brown	Cages	4	2	02/01/05
Culpers Darlington	Cages	2	2	26/12/04
Culpers Sheffield	Cages	4	2	25/12/04
H W Mollom	Cages	2	1	25/12/04
Helen French	Cages	1	1	02/01/05
Hillmans	Cages	3	2	25/12/04
Hillside Graham	Cages	2	2	26/12/04
Inchman Gillingham	Cages	5	3	25/12/04
Inchman Leeds	Cages	4	2	25/12/04
JC Normans	Cages	2	1	25/12/04
Jemima Longfellow	Cages	7	5	25/12/04
Johns Night	Cages	1	1	17/12/04
Lex Luther	Cages	1	1	25/12/04
Lindman Quennsferry	Cages			
Lindman Whitton	Cages			
Marstons	Cages			

[\[Next\]](#)

For more detailed information on individual numbered cage movements left mouse click onto "Unit Type"



start

SITU-8

SITU-8.CO.UK - ONLI...

Microsoft PowerPoint ...



Internet

15:57

SITU-8.CO.UK - ONLINE MANAGEMENT APPLICATION - Microsoft Internet Explorer provided by Freeserve

File Edit View Favorites Tools Help Address http://www.situ-8.co.uk/item.php?&locationid=SRJEMC&packagingtype=Cages Go

Simons Reeve RENTAL

LATEST NEWS STOCK LIST BUILD REPORTS PLACE ORDER CONTACT US UNIT FINDER

ITEMS FOR JEMIMA LONGFELLOW (CAGES)

[Back to Stock List](#)

Date At Location	Unit Number	Unit Type	Tracking Location	Overdue
30/10/04	SRCG110054	Cages	Jemima Longfellow	yes
06/11/04	SRCG110002	Cages	Jemima Longfellow	yes
06/11/04	SRCG110319	Cages	Jemima Longfellow	yes
06/11/04	SRCG110209	Cages	Jemima Longfellow	yes
11/12/04	SRCG110492	Cages	Jemima Longfellow	yes
25/12/04	SRCG110373	Cages	Jemima Longfellow	no
25/12/04	SRCG110369	Cages	Jemima Longfellow	no

To return to previous page left mouse click over "Back to Stock List"

Date unit was received

Specific unit number, could be barcode, RFID or manual input Alpha / Numeric

Type of unit

Unit is due for return if "overdue"

Done Internet

start SITU-8 SITU-8.CO.UK - ONLI... Microsoft PowerPoint ... 15:58

LOGGED IN AS: SRDEPT

LOGOUT

Simons Reeve

RENTAL

LATEST NEWS

STOCK LIST

BUILD REPORTS

PLACE ORDER

CONTACT US

UNIT FINDER

STOCK LIST - PAGE 1

Tracking Location	Unit Type	Quantity at Location	Over Time Limit	Last Entry Date
Adrian Pugh Peckham	Cages	3	2	02/01/05
Adrian Pugh Salisbury	Cages	2	2	25/12/04
Andrew Rose	Cages	2	2	25/12/04
Benthams	Cages	2	2	25/12/04
Charles Brown	Cages	4	2	02/01/05
Culpers Darlington	Cages	2	2	26/12/04
Culpers Sheffield	Cages		2	25/12/04
H W Mollom	Cages		1	25/12/04
Helen French	Cages		1	02/01/05
Hillmans	Cages		2	25/12/04
Hillside Graham	Cages		2	26/12/04
Inchman Gillingham	Cages		3	25/12/04
Inchman Leeds	Cages	4	2	25/12/04
JC Normans	Cages	2	1	25/12/04
Jemima Longfellow	Cages	7	5	25/12/04
Johns Night	Cages	1	1	17/12/04
Lex Luther	Cages	1	1	25/12/04
Lindman Quennsferry	Cages	2	2	02/01/05
Lindman Whitton	Cages	3	1	25/12/04
Marstons	Cages	3	1	11/11/04

[\[Next\]](#)

To view Management Reports left mouse click on "BUILD REPORTS" button.



start

SITU-8

SITU-8.CO.UK - ONLI...

Microsoft PowerPoint ...

Internet

15:57

LOGGED IN AS: SRDEPT

LOGOUT

Simons Reeve RENTAL

To view reports on screen ensure that
"On Screen View" is checked

PLACE ORDER

CONTACT US

UNIT FINDER

BUILD REPORTS

Your Email Address:

Report Type:

☒ On Screen View

☐ Emailed As CSV File

Tracking Location:

SRJEMC Jemima Longfellow

Unit Type:

Cages

Date From:

1st Jan 2000

Date To:

1st Dec 2010

Available Reports:

SR02 - STOCK STATUS

SR03 - LATE RETURNS

SR04 - UNIT DETAIL REPORT

SR05 - CYCLE TIMES

SR06 - UNIT HISTORY



start

SITU-8

SITU-8.CO.UK - ONLI...

Microsoft PowerPoint ...

Internet

16:05

SITU-8.CO.UK - ONLINE MANAGEMENT APPLICATION

File Edit View Favorites Tools Help

Simons Reeve

LATEST NEWS

BUILD REPORTS

Your Email Address:

Report Type:

Tracking Location:

Unit Type:

Date From:

Date To:

Available Reports:

SR04 - UNIT DETAIL REPORT

SR05 - CYCLE TIMES

SR06 - UNIT HISTORY

provided by Freeserve

situ-8.co.uk/reports.php?

LOGGED IN AS: SRDEPT LOGOUT

ORDER CONTACT

Downloaded As CSV File

As Master user you have the choice of selecting either "All locations" or an individual user location on drop down menu, to view management reports. Individual location users will only have single site access as standard or may have multi-site access depending on password access level

All locations
SRANDR Andrew Rose
SRARNP Adrian Pugh Peckham
SRARNS Adrian Pugh Salisbury
SRBENT Benthams
SRCHAR Charles Brown
SRCULD Culpers Darlington
SRCULS Culpers Sheffield
SRDEPT SR Depot
SRHELE Helen French
SRHILA Hillmans
SRHILB Hillside Graham
SRHWM H W Mollom
SRINCG Inchman Gillingham
SRINCL Inchman Leeds
SRJCT6 JC Normans
SRJEMC **Jemima Longfellow**
SRJOHN Johns Night
SRLEXU Lex Luther
SRLINQ Lindman Quennsferry
SRLINW Lindman Whitton
SRMARS Marstons
SRMCCA McCallum
SRMONT Montegues
SRMOTO Motolharmi
SROCTA October Brown
SROCTR Olive Grey
SROCTS Ocean Ltd
SRPENB Pendulem Bristol
SRPEND Pendulem Doncaster

start SITU-8 SITU-8.CO.UK - ONLI... Microsoft PowerPoint ... Internet 16:00

LOGGED IN AS: SRDEPT

LOGOUT

Simons Reeve



LATEST NEWS

STOCK LIST

BUILD REPORTS

PLACE ORDER

CONTACT US

UNIT FINDER

BUILD REPORTS

Your Email Address:

Report Type:

☒ On Screen View

☐ Emailed As CSV File

Tracking Location:

All locations

Unit Type:

Cages

Date From:

All packaging types

Date To:

1st Dec 2010

Available Reports:

SR02 - STOCK STATUS

SR03 - LATE RETURNS

SR04 - UNIT DETAIL REPORT

SR05 - CYCLE TIMES

SR06 - UNIT HISTORY

"All Locations" has been selected for this demonstration

Select equipment type from drop down menu



start

SITU-8

SITU-8.CO.UK - ONLI...

Microsoft PowerPoint ...

Internet

16:07

SITU-8.CO.UK - ONLINE MANAGEMENT APPLICATION - Microsoft Internet Explorer provided by Freeserve

File Edit View Favorites Tools Help Address http://www.situ-8.co.uk/reports.php? Go

LOGGED IN AS: SRDEPT [LOGOUT](#)

Simons Reeve RENTAL

[LATEST NEWS](#) [STOCK LIST](#) [BUILD REPORTS](#) [PLACE ORDER](#) [CONTACT US](#) [UNIT FINDER](#)

BUILD REPORTS

Your Email Address:

Report Type: ☒ On Screen View ☐ Emailed As CSV File

Tracking Location:

Unit Type:

Date From: 1st Jan 2000

Date To: 1st Apr 2010

Available Reports:

- SR02 - STOCK STAT
- SR03 - LATE RETURN
- SR04 - UNIT DETAIL RE
- SR05 - CYCLE TIME
- SR06 - UNIT HISTOR

Select date fields for report on drop down menus

start SITU-8 SITU-8.CO.UK - ONLI... Microsoft PowerPoint ... Internet 16:08

Simons Reeve



LOGGED IN AS: SRDEPT

LOGOUT

LATEST NEWS

STOCK LIST

BUILD REPORTS

PLACE ORDER

CONTACT US

UNIT FINDER

BUILD REPORTS

Your Email Address:

Report Type:

☒ On Screen View☐ Emailed As CSV File

Tracking Location:

All locations

Unit Type:

Cages

Date From:

1st Jan 2000

Date To:

1st Apr 2005

Available Reports:

SR02 - STOCK STATUS

SR03 - LATE RETURNS

SR04 - UNIT DETAIL REPORT

SR05 - CYCLE TIMES

SR06 - UNIT HISTORY

Select required report from drop down menu. Reports can be tailored to suit individual requirements.



start

SITU-8

SITU-8.CO.UK - ONLI...

Microsoft PowerPoint ...

Internet

16:08

LOGGED IN AS: SRDEPT

LOGOUT

Simons Reeve

RENTAL

LATEST NEWS

STOCK LIST

BUILD REPORTS

PLACE ORDER

CONTACT US

UNIT FINDER

REPORT SR02 STOCK STATUS - PAGE 1

For all locations.

For packaging type Cages only.

Tracking Location	Unit Type	Qty at Location	Due for Return	Last Entry
Adrian Pugh Peckham	Cages	3	2	02/01/05
Adrian Pugh Salisbury	Cages	2	2	25/12/04
Andrew Rose	Cages	2	2	
Bentham	Cages	2	2	
		4	2	
Culpers Darlington	Cages	2	2	
Culpers Sheffield	Cages	4	2	
H W Mollom	Cages	2	1	
Helen French	Cages	1	1	
Hillmans	Cages	3	2	25/12/04
Hillside Graham	Cages	2	2	26/12/04
Inchman Gillingham	Cages	5	3	25/12/04
Inchman Leeds	Cages	4	2	25/12/04
JC Normans	Cages	2	1	25/12/04
Jemima Longfellow	Cages	7	5	25/12/04
Johns Night	Cages	1	1	17/12/04
Lex Luther	Cages	1	1	25/12/04
Lindman Quennsferry	Cages	2	2	02/01/05
Lindman Whitton	Cages	3	1	25/12/04
Marstons	Cages	3	1	11/11/04

[\[Next\]](#)

Selected report summary

To select different report
left mouse click over
"BUILD REPORTS" and
follow data field selection
process as before

Simons Reeve



LATEST NEWS

STOCK LIST

BUILD REPORTS

PLACE ORDER

REPORT SR03 LATE RETURNS- PAGE 1

For all locations.

For packaging type Cages only.

Report SR03 is an exception report detailing specific units that are overdue and due for return, giving the date they were received on site

Tracking Location	Unit Type	Unit Number	Date
Adrian Pugh Peckham	Cages	SRCG110042	15/11/04
Adrian Pugh Peckham	Cages	SRCG110161	17/12/04
Charles Brown	Cages	SRCG110164	17/12/04
Charles Brown	Cages	SRCG110070	30/10/04
Culpers Sheffield	Cages	SRCG110485	11/12/04
Culpers Sheffield	Cages	SRCG110303	30/10/04
H W Mollom	Cages	SRCG110486	11/12/04
Hillmans	Cages	SRCG110570	10/12/04
Hillmans	Cages	SRCG110049	30/10/04
Inchman Gillingham	Cages	SRCG110064	31/10/04
Inchman Gillingham	Cages	SRCG110487	11/12/04
Inchman Gillingham	Cages	SRCG110494	11/12/04
Inchman Leeds	Cages	SRCG110300	31/10/04
Inchman Leeds	Cages	SRCG110053	10/12/04
JC Normans	Cages	SRCG110573	10/12/04
Jemima Longfellow	Cages	SRCG110492	11/12/04
Jemima Longfellow	Cages	SRCG110209	06/11/04
Jemima Longfellow	Cages	SRCG110002	06/11/04
Jemima Longfellow	Cages	SRCG110319	06/11/04
Jemima Longfellow	Cages	SRCG110054	30/10/04

[\[Next\]](#)

Simons Reeve



LATEST NEWS

STOCK LIST

BUILD REPORTS

PLACE ORDER

REPORT SR04 UNIT DETAIL REPORT - PAGE 1

For all locations.

For packaging type Cages only.

Report SR04 gives detail of specific units, including date received and whether they are overdue or not

Tracking Location	Unit Type	Unit Number	Date	Overdue
Adrian Pugh Peckham	Cages	SRCG110015	02/01/05	NO
Adrian Pugh Peckham	Cages	SRCG110042	15/11/04	yes
Adrian Pugh Peckham	Cages	SRCG110161	17/12/04	yes
Adrian Pugh Salisbury	Cages	SRCG110134	25/12/04	no
Adrian Pugh Salisbury	Cages	SRCG110133	25/12/04	no
Andrew Rose	Cages	SRCG110404	25/12/04	no
Andrew Rose	Cages	SRCG110372	25/12/04	no
Benthams	Cages	SRCG110527	25/12/04	no
Benthams	Cages	SRCG110371	25/12/04	no
Charles Brown	Cages	SRCG110305	25/12/04	no
Charles Brown	Cages	SRCG110213	02/01/05	NO
Charles Brown	Cages	SRCG110070	30/10/04	yes
Charles Brown	Cages	SRCG110164	17/12/04	yes
Culpers Darlington	Cages	SRCG110173	26/12/04	no
Culpers Darlington	Cages	SRCG110172	26/12/04	no
Culpers Sheffield	Cages	SRCG110485	11/12/04	yes
Culpers Sheffield	Cages	SRCG110528	25/12/04	no
Culpers Sheffield	Cages	SRCG110303	30/10/04	yes
Culpers Sheffield	Cages	SRCG110215	25/12/04	no
H W Mollom	Cages	SRCG110154	25/12/04	no

[\[Next\]](#)

SITU-8.CO.UK - ONLINE MANAGEMENT APPLICATION - Microsoft Internet Explorer provided by Freeserve

File Edit View Favorites Tools Help

Back

Search

Favorites

Addresshttp://www.situ-8.co.uk/report-sr05.php?toemail=8eGo

LOGGED IN AS: SRDEPT

LOGOUT

Simons Reeve

RENTAL

LATEST NEWS

STOCK LIST

BUILD REPORTS

PLACE ORDER

CONTACT US

UNIT FINDER

REPORT SR05 CYCLE TIMES - PAGE 1

For all locations.
For all packaging types.

Tracking Location	Unit Type	Days Overdue	No. of Cycles	Average Cycle Time	Max Cycle Time
All Locations	Cages	8.05	49	0.48	5

Report SR05 provides
information on cycle time of
equipment fleet at either all
locations or individual locations

Done

start

SITU-8

SITU-8.CO.UK - ONLI...

Microsoft PowerPoint ...

Internet

16:15

Simons Reeve



LATEST NEWS

STOCK LIST

BUILD REPORTS

PLACE ORDER

CONTACT US

REPORT SR06 UNIT HISTORY

Unit Serial Number:

Find

**Enter equipment unit number and
press "Find" to display report**

**Report SR06 provides history
and audit trail of specific unit
number in and out of user site,
or sites, depending on security
access level**



start

Inbox - Microsoft Out...

situ-8 - Message (Plai...

http://www.situ-8.co...

Microsoft PowerPoint ...

Internet

13:51

Enter email address that you want report sent to

To receive reports in Excel format ensure "Emailed As CSV File" is checked

BUILD REPORTS

Your Email Address:

gideon@hillman-consulting.co.uk

Report Type:

☐ On Screen View

☒ Emailed As CSV File

Tracking Location:

SRARNP Adrian Pugh Peckham

Unit Type:

Cages

Date From:

1st Jan 2000

Date To:

1st Dec 2010

Enter data fields in the same way as "on screen view" reporting

Available Reports:

SR02 - STOCK STATUS

SR03 - LATE RETURNS

SR04 - UNIT DETAIL REPORT

SR05 - CYCLE TIMES

SR06 - UNIT HISTORY

Select report to be emailed to address above



start

Inbox - Microsoft Out...

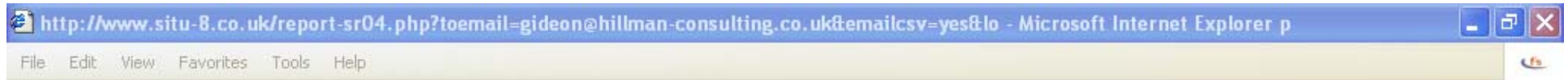
situ-8 - Message (Plai...

http://www.situ-8.co...

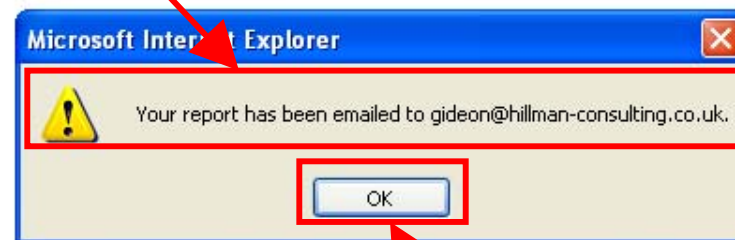
Microsoft PowerPoint ...

Internet

13:53



**Message will appear to confirm
report in Excel format has been
emailed to selected recipient**



**Left mouse click "OK" to return to
"BUILD REPORTS" page**



Microsoft Excel - Jemima Longfellow CSV REPORT

File Edit View Insert Format Tools Data Window Help

Type a question for help

100% Arial 10 B I U

Reply with Changes... End Review...

	A	B	C	D	E	F	G	H	I	J	K	L	M
1	Date	Tracking Location	Unit Type	Serial No									
2	11/12/2004	Jemima Longfellow	Cage	SRCG110492									
3	06/11/2004	Jemima Longfellow	Cage	SRCG110002									
4	06/11/2004	Jemima Longfellow	Cage	SRCG110319									
5	06/11/2004	Jemima Longfellow	Cage	SRCG110209									
6	30/10/2004	Jemima Longfellow	Cage	SRCG110054									
7													
8													
9													
10													
11													
12													
13													
14													
15													
16													
17													
18													
19													
20													
21													
22													
23													
24													
25													
26													
27													
28													
29													
30													
31													
32													
33													

Data Conversion to Excel format facilitates data sortation and graphical trend analysis if required.

SR03

Draw AutoShapes

Simons Reeve



LOGGED IN AS: SRARNP

LOGOUT

LATEST NEWS

STOCK LIST

BUILD REPORTS

PLACE ORDER

CONTACT US

BUILD REPORTS

Your Email Address:

Report Type:

☒ On Screen View

☐ Emailed As CSV File

Tracking Location:

Unit Type:

Date From:

Date To:

Available Reports:

Any equipment user can order more equipment from central fleet administrator, or Master User, on-line.

Left mouse click on "PLACE ORDER"



start

Inbox - Microsoft Out...

situ-8 - Message (Plai...

http://www.situ-8.co...

Microsoft PowerPoint ...

Internet

13:54

Simons Reeve



LOGGED IN AS: SRARNP

LOGOUT

LATEST NEWS

STOCK LIST

BUILD R

PLACE ORDER

Order Date: 24/03/05 14:06

Your Order Ref: XYZ0001

Unit Type: Cages

Number of Units Required: 200

Delivery Address: Adrian Pugh
Peckham
UK

Order Entered By: A PUGH

Confirmation Email Address: adrian@pugh.c0.uk

PLACE ORDER NOW

User must complete all fields on the order form

User must Mouse click "PLACE ORDER NOW" to submit order to Central Fleet Administrator



start

Inbox - Microsoft Out...

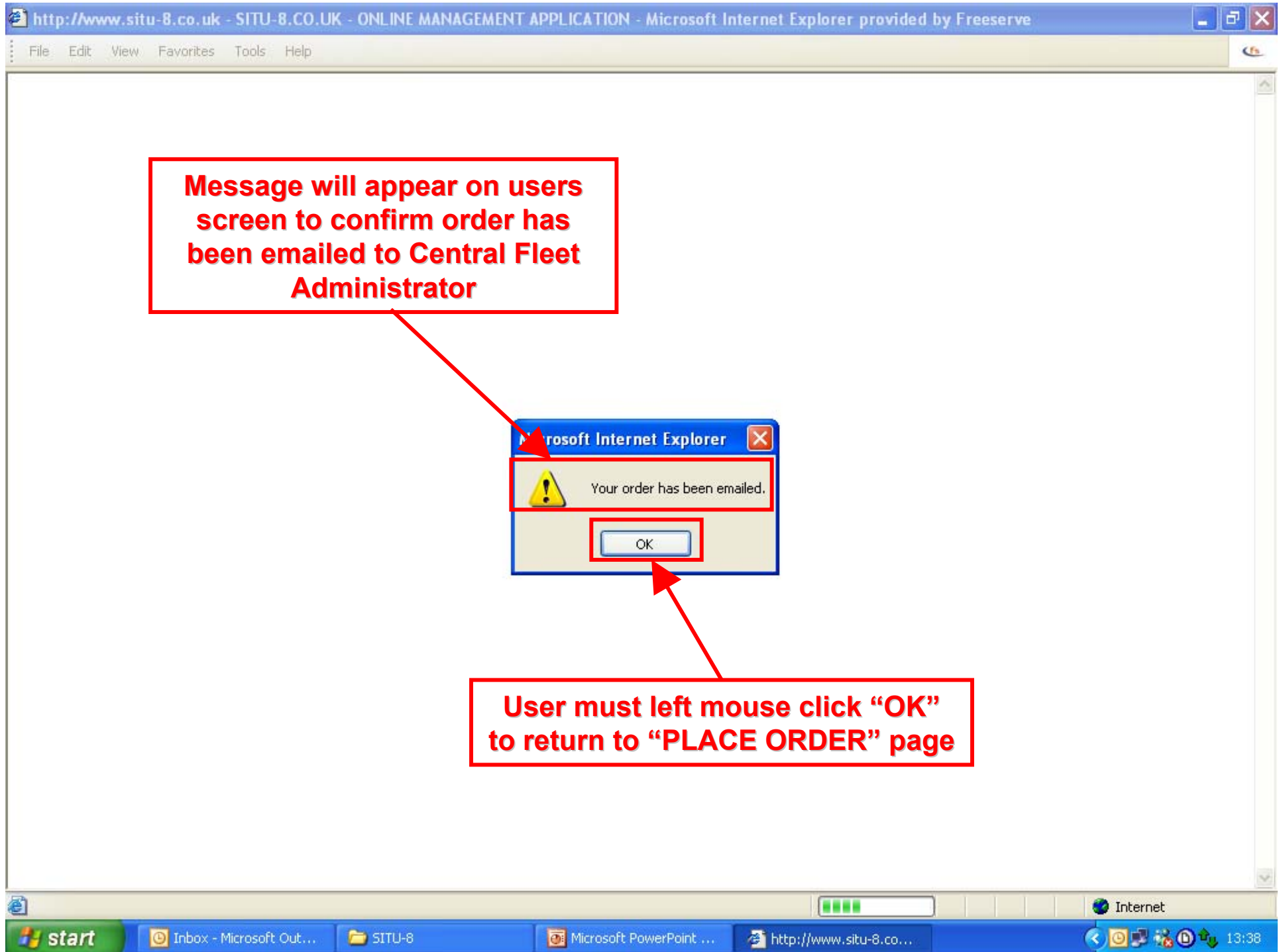
situ-8 - Message (Plai...

http://www.situ-8.co...

Microsoft PowerPoint ...

Internet

14:08





Simons Reeve



LOGGED IN AS: SRARNP

LOGOUT

LATEST NEWS

STOCK LIST

BUILD REPORTS

PLACE ORDER

CONTACT US

WELCOME

Welcome to the SITU-8 Asset Management System, from Simons Reeve Rental.

SITU-8 is a central management and control system for Simons Reeve durable packaging equipment fleets with a comprehensive password protected Internet enabled management reporting system.

SITU-8 will provide tools and reporting functions necessary for you to

- Manage and control durable packaging fleets
- Reduce overall packaging fleet costs
- Increase fleet visibility and cost control
- Optimise packaging fleet utilisation
- Provide proof of accountability for damage and loss
- Manage your repair and maintenance program

To ensure you get the maximum benefit from this Intranet, please download the SITU-8 Website User Guide PDF file from the link below.



Facility to enable any equipment user to contact Central Fleet Administrator, mouse click "CONTACT US"

LATEST NEWS

THE NEW SITU-8 SITE IS NOW IN THE PROCESS OF BEING TESTED READY FOR LAUNCH.

DOWNLOAD WEBSITE USER GUIDE

Your Email Address:

Request Document



Done

Internet



Inbox - Microsoft Out...

situ-8 - Message (Plai...

http://www.situ-8.co...

Microsoft PowerPoint ...

13:43

Simons Reeve

RENTAL

LOGGED IN AS: SRARNP

LOGOUT

LATEST NEWS

STOCK

CONTACT US

Please enter your query, then click Send.

Your Email:

Your Tel:

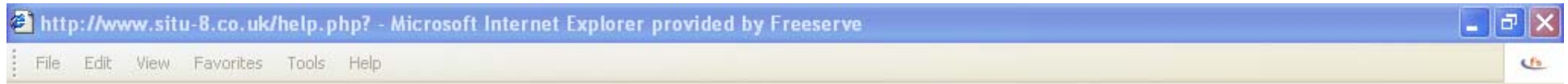
Your Query

Send

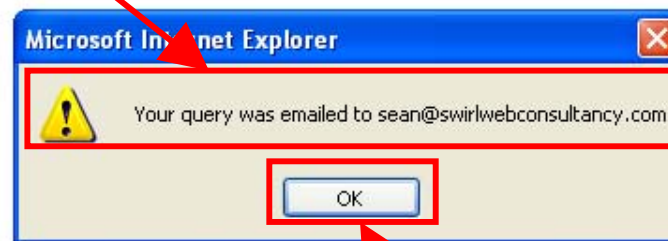
Cancel

User must complete all fields on the enquiry form

User must mouse click "Send" to submit query to central fleet administrator



Message will appear on the users screen to confirm their enquiry has been emailed to Central Fleet Administrator



User must left mouse click "OK" to return to "WELCOME" page



Simons Reeve



LOGGED IN AS: SRDEPT

LOGOUT

LATEST NEWS

STOCK LIST

BUILD REPORTS

PLACE ORDER

CONTACT US

UNIT FINDER

WELCOME

Welcome to the SITU-8 Asset Management System, from Simons Reeve Rental.

SITU-8 is a central management and control system for Simons Reeve durable packaging equipment fleets with a comprehensive password protected Internet enabled management reporting system.

SITU-8 will provide tools and reporting functions necessary for you to

- Manage and control durable packa
- Reduce overall packaging fleet cos
- Increase fleet visibility and cost cor
- Optimise packaging fleet utilisation
- Provide proof of accountability for d
- Manage your repair and maintenanc

To ensure you get the maximum ben
download the SITU-8 Website User G

Master User, or Fleet Administrator, can search for specific numbered units using "Unit Finder" function. Left mouse click over button.



LATEST NEWS

THE NEW SITU-8 SITE IS NOW IN THE PROCESS OF BEING TESTED READY FOR LAUNCH.

DOWNLOAD WEBSITE USER GUIDE

Your Email Address:

Request Document



start

SITU-8

SITU-8.CO.UK - ONLI...

SITU-8 - DEMO SITE ...

Internet

16:38



SITU-8.CO.UK - ONLINE MANAGEMENT APPLICATION - Microsoft Internet Explorer provided by Freeserve

File Edit View Favorites Tools Help Address http://www.situ-8.co.uk/item-locator.php Go

LOGGED IN AS: SRDEPT [LOGOUT](#)

Simons Reeve RENTAL

[LATEST NEWS](#) [STOCK LIST](#) [BUILD REPORTS](#) [PLACE ORDER](#) [CONTACT US](#) [UNIT FINDER](#)

UNIT FINDER

Item Serial Number:
 [Find](#)

Location	Date On Location
SRJEMC Jemima Longfellow	06/11/04

Report will display last recorded location of the specific unit, and date it was received at that location.

Done Internet

start SITU-8 SITU-8.CO.UK - ONLI... SITU-8 - DEMO SITE ... 16:39

Simons Reeve



LOGGED IN AS: SRARNP

LOGOUT

LATEST NEWS

STOCK LIST

BUILD REPORTS

PLACE ORDER

CONTACT US

WELCOME

Welcome to the SITU-8 Asset

SITU-8 is a central management
fleets with a comprehensive

**Remember to Log out when
session is finished**

SITU-8 will provide tools and reporting functions necessary for you to

- Manage and control durable packaging fleets
- Reduce overall packaging fleet costs
- Increase fleet visibility and cost control
- Optimise packaging fleet utilisation
- Provide proof of accountability for damage and loss
- Manage your repair and maintenance program

To ensure you get the maximum benefit from this Internet site and the reporting functions available, please
download the SITU-8 Website User Guide PDF file from the link below.

LATEST NEWS

THE NEW SITU-8 SITE IS NOW IN THE PROCESS OF BEING TESTED READY FOR LAUNCH.

DOWNLOAD WEBSITE USER GUIDE

Your Email Address:

Request Document



Simons Reeve



LOGIN

LATEST NEWS

STOCK LIST

BUILD REPORTS

PLACE ORDER

CONTACT US

LOGOUT SUCCESSFUL ...

You have been successfully logged out of the system.

***If you Require Further Information on the
system, please contact***



asset management system



Gideon Hillman Consulting

Materials Handling & Supply Chain Management

Tel: 01926 430 883

Mobile: 07944 841 344

Email: gideon@hillman-consulting.co.uk